

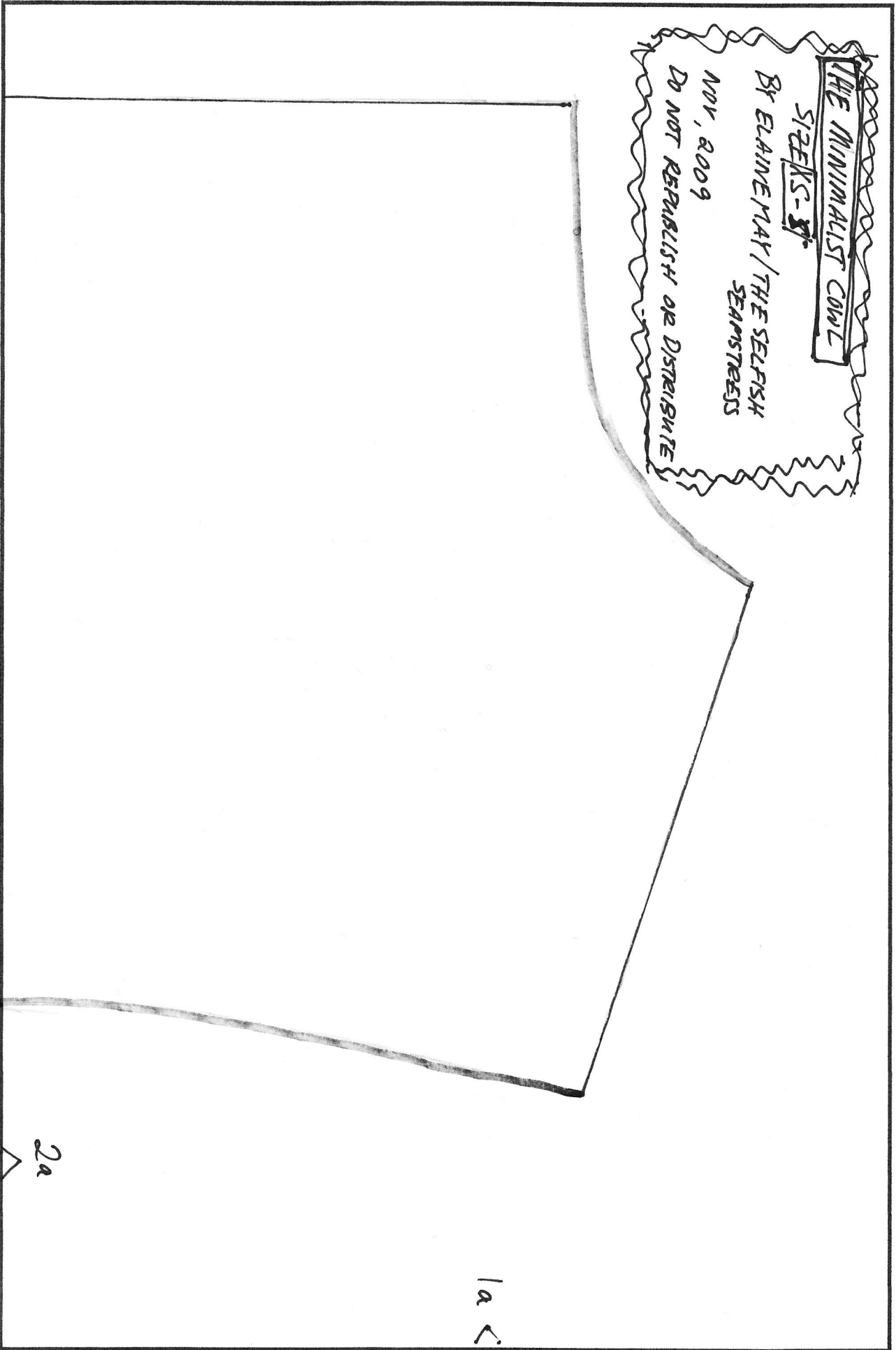
THE MINIMALIST COWL

SIZES - ~~37~~

BY ELAINE MAY / THE SELFISH SEAMSTRESS

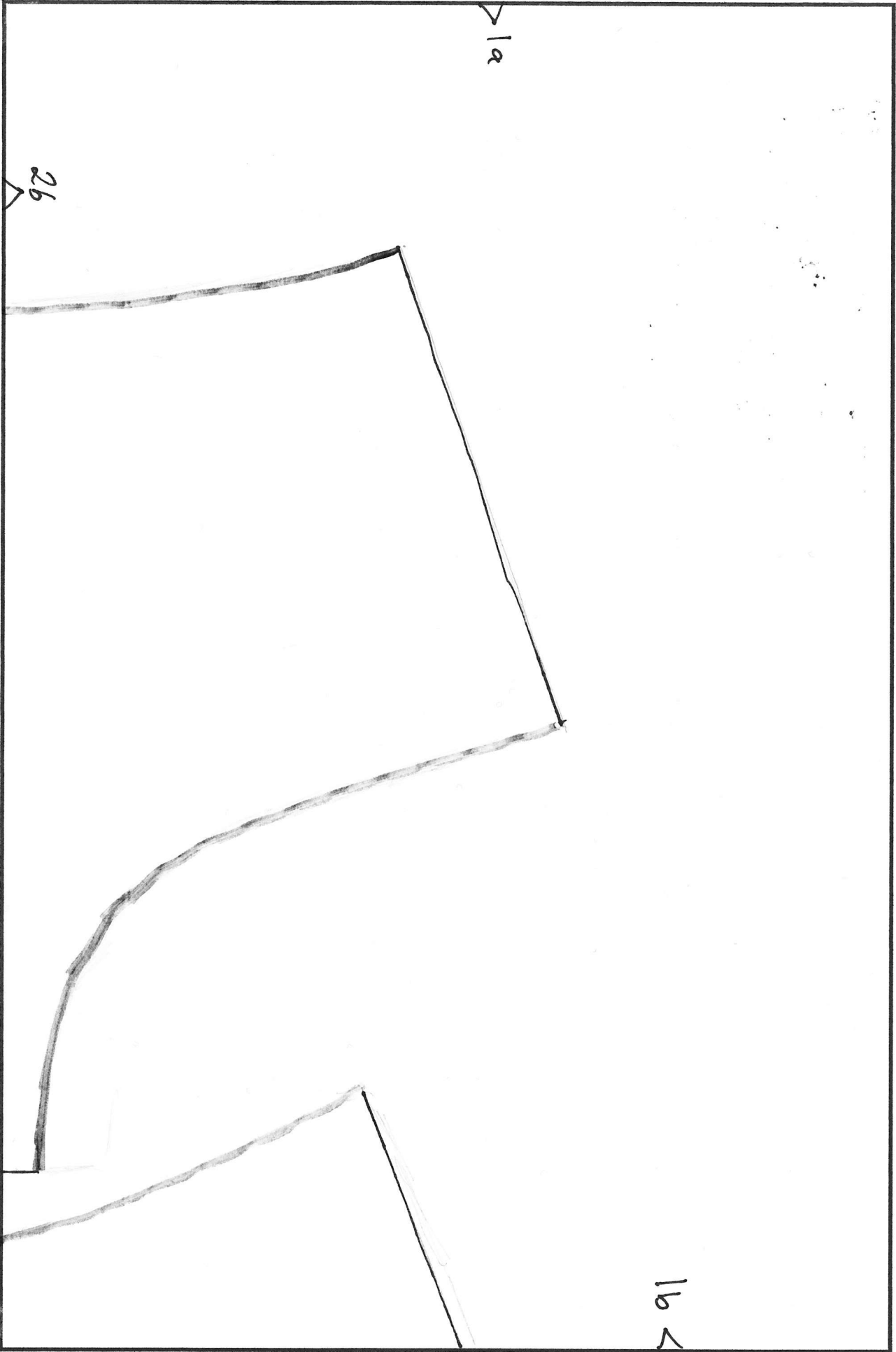
NOV, 2009

DO NOT REPRODUCE OR DISTRIBUTE



1a <

2a



1a

26

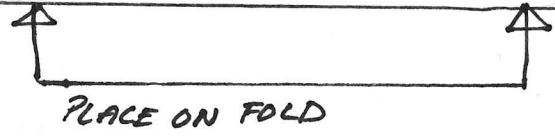
1b

> 1b

0000
CENTER BACK

> 2c

CENTER BACK



THE MINIMALIST COWL

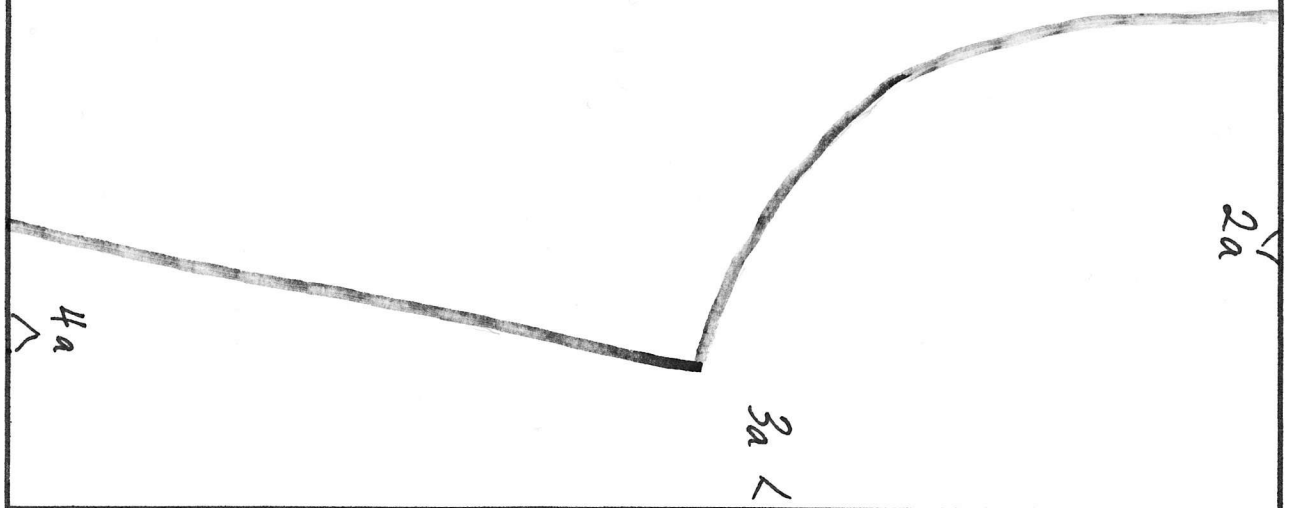
SIZE XS-S

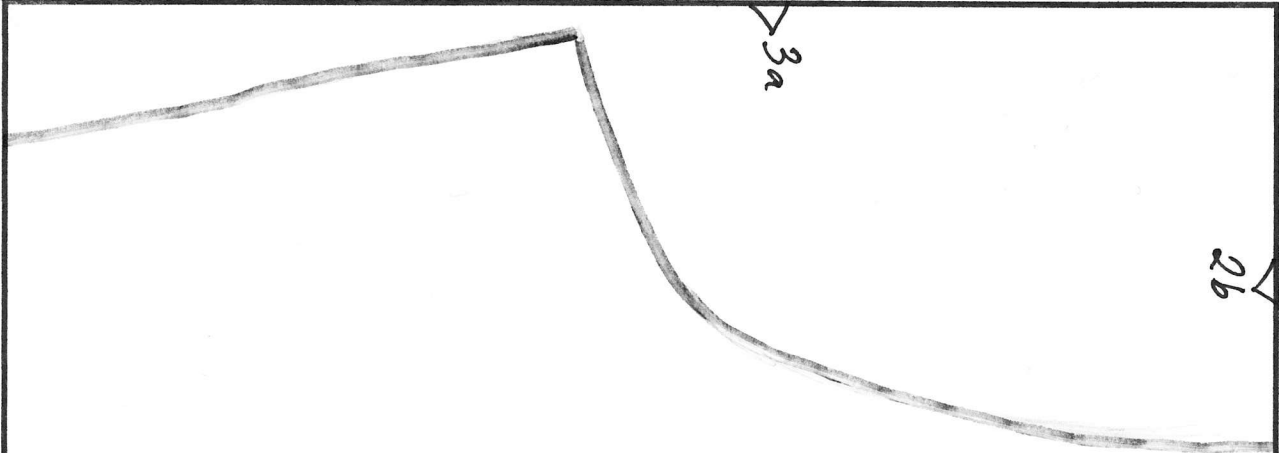
BY ELAINENWAY / THE SELFISH SEAMSTRESS

BACK

CUT 1 ON FOLD

5/8" SEAM ALLOWANCE INCLUDED





3a

2b

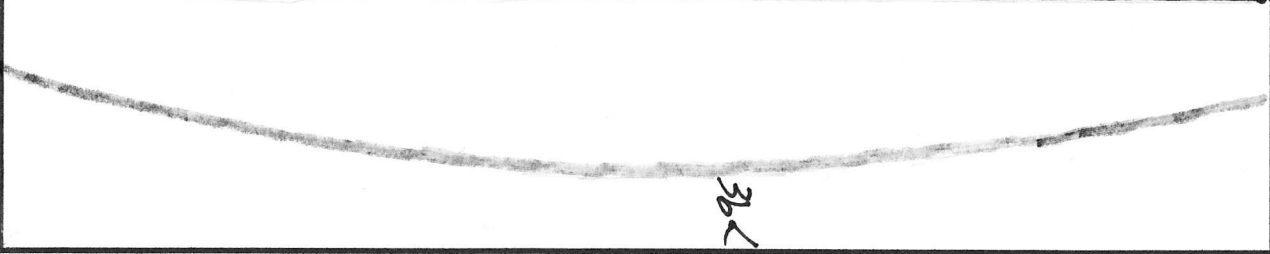
THE MINIMALIST COWL

SIZE XS-S

BY ELAINEMAY / THE
SELFISH SEAMSTRESS

4b

PLACE ON FOLD



3b

36

20

THE MINIMALIST COWL

SIZE XS-S

BY ELAINEMAY / THE SELFISH SEAMSTRESS

COLLAR

CUT 1 ON FOLD

5/8" SEAM ALLOWANCE INCLUDED

Hc

GRAINLINE

6a

4a

5a

4b

FRONT

CUT 1 ON FOLD

5/8" SEAM ALLOWANCE INCLUDED

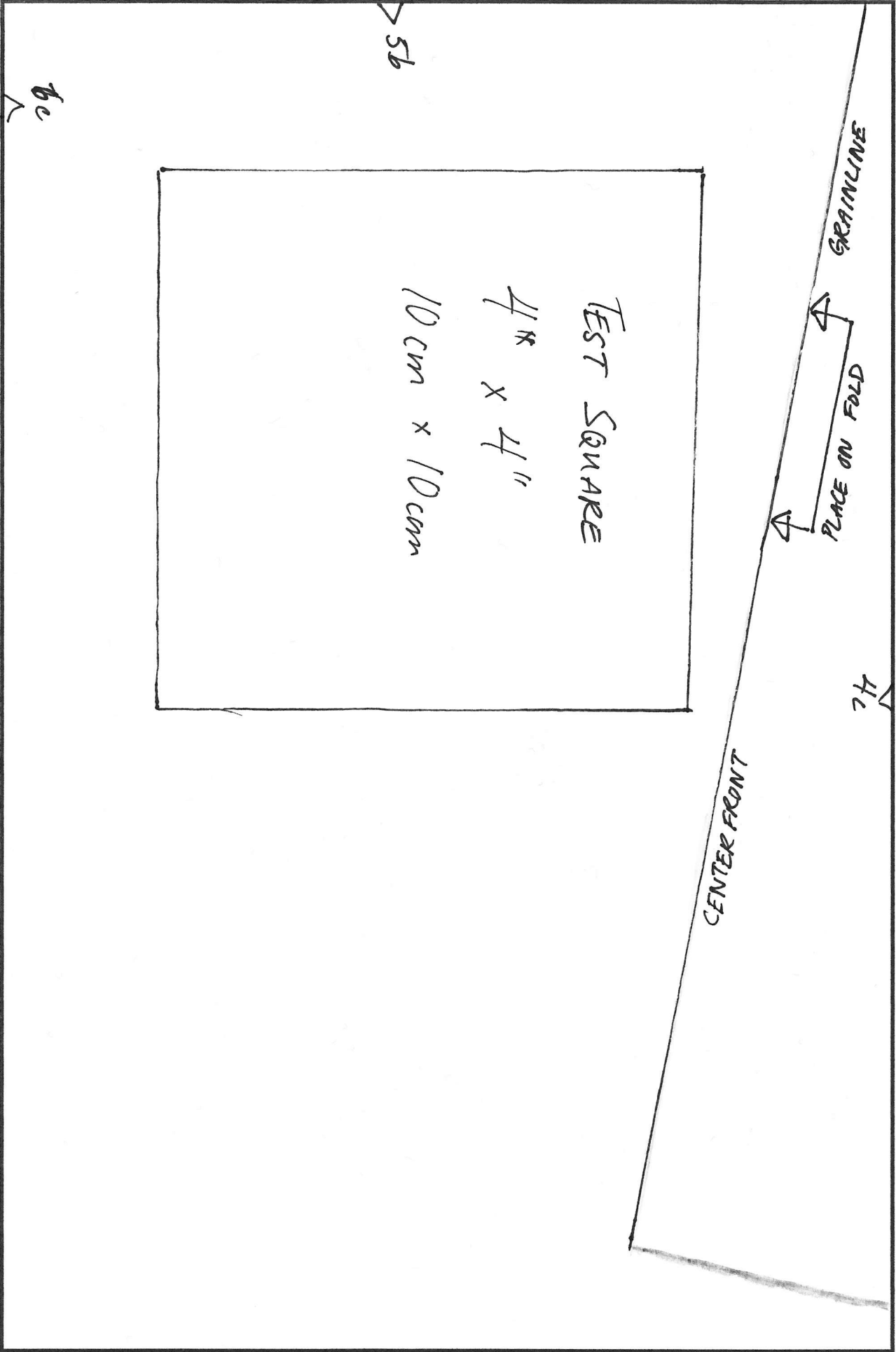
5a

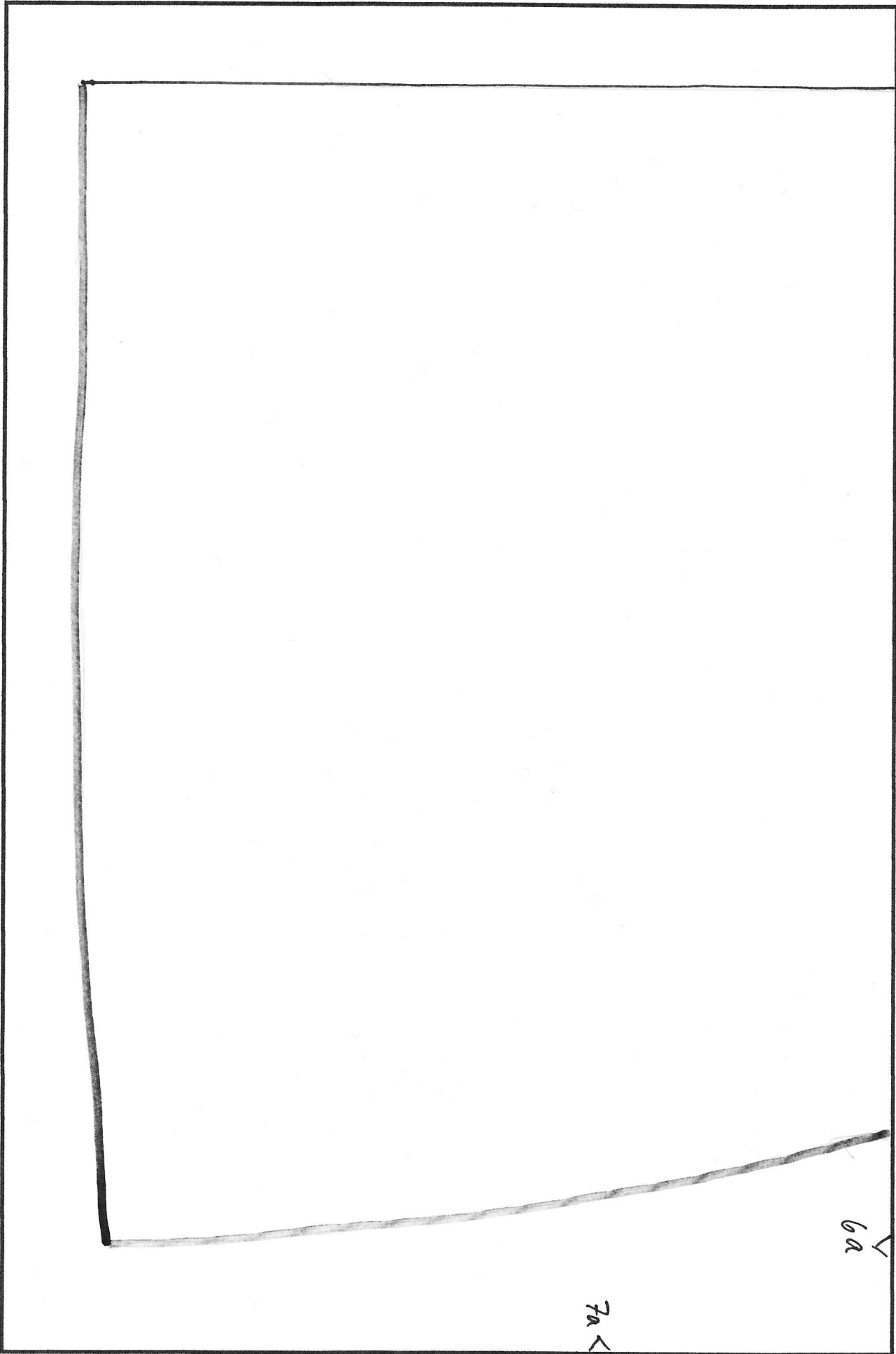
GRAINLINE

CENTER FRONT

6b

5b





7a

6b

7b

v
6c

> 7b

THE MINIMALIST COLLAR

BY ELAINE MAY / THE SELFISH SEAMSTRESS
NOV 2009

INSTRUCTIONS

1. STITCH SIDE SEAMS AND SHOULDER SEAMS. PRESS SEAM ALLOWANCES OPEN.
2. STITCH BACK COLLAR SEAM. PRESS SEAM ALLOWANCES OPEN.
3. STITCH COLLAR TO TOP, WRONG SIDE ON RIGHT SIDE MATCHING NECK EDGES
4. PRESS SEAM ALLOWANCES DOWNWARDS TOWARDS INSIDE OF TOP. TOPSTITCH.
5. TURN IN SEAM ALLOWANCES ON HEM, ARM OPENINGS AND COLLAR EDGES. STITCH.

DO NOT RE-PUBLISH OR DISTRIBUTE THIS PATTERN WITHOUT PERMISSION