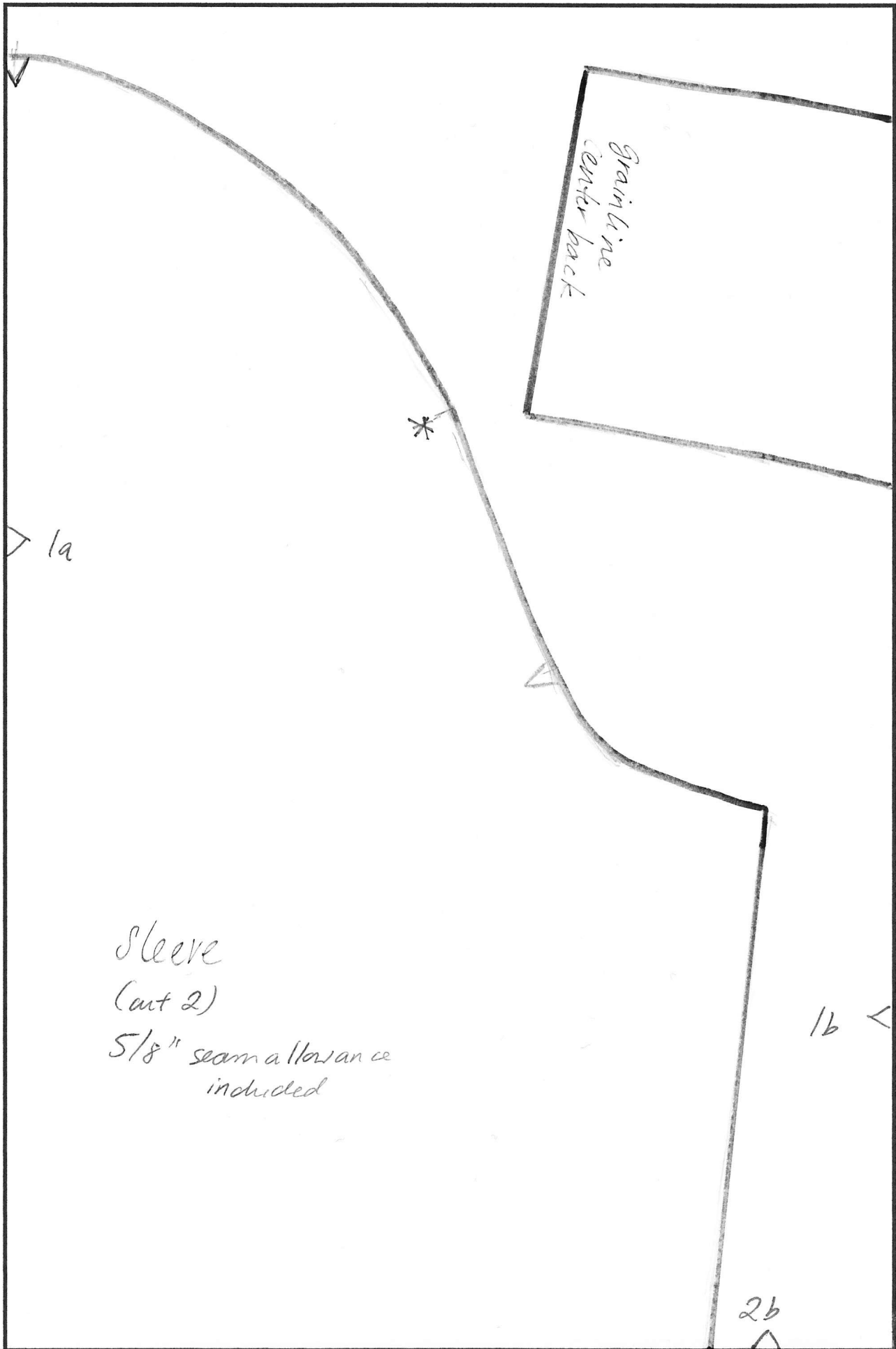


\*

1a <

ENGLISH TUTOR DRESS  
SIZE 4  
BY ELAINE MAY /  
THE SELFISH SEAMSTRESS

2a >



Grainline  
center back

Sleeve  
(cut 2)  
5/8" seam allowance  
included

1a

1b

2b

1/8" seam allowance included  
(cut 1)  
Left upper collar

ENGLISH TUTOR PRESS  
SIZE 4  
BY ELAINE MAY  
THE SELFISH SEAMSTRESS

16

20

2a

TEST SQUARE

4" x 4"

10 cm x 10 cm

grain line  
center for back

3a

4a

✓  
26

36

3a

grainline  
center back

4b  
△

2c

ENGLISH TUTOR DRESS  
SIZE 4  
BY ELAINEMAY /  
THE SELFISH SEAMSTRESS

3b

left under collar  
(cut 1)  
5/8" seam allowance included

4c

4a

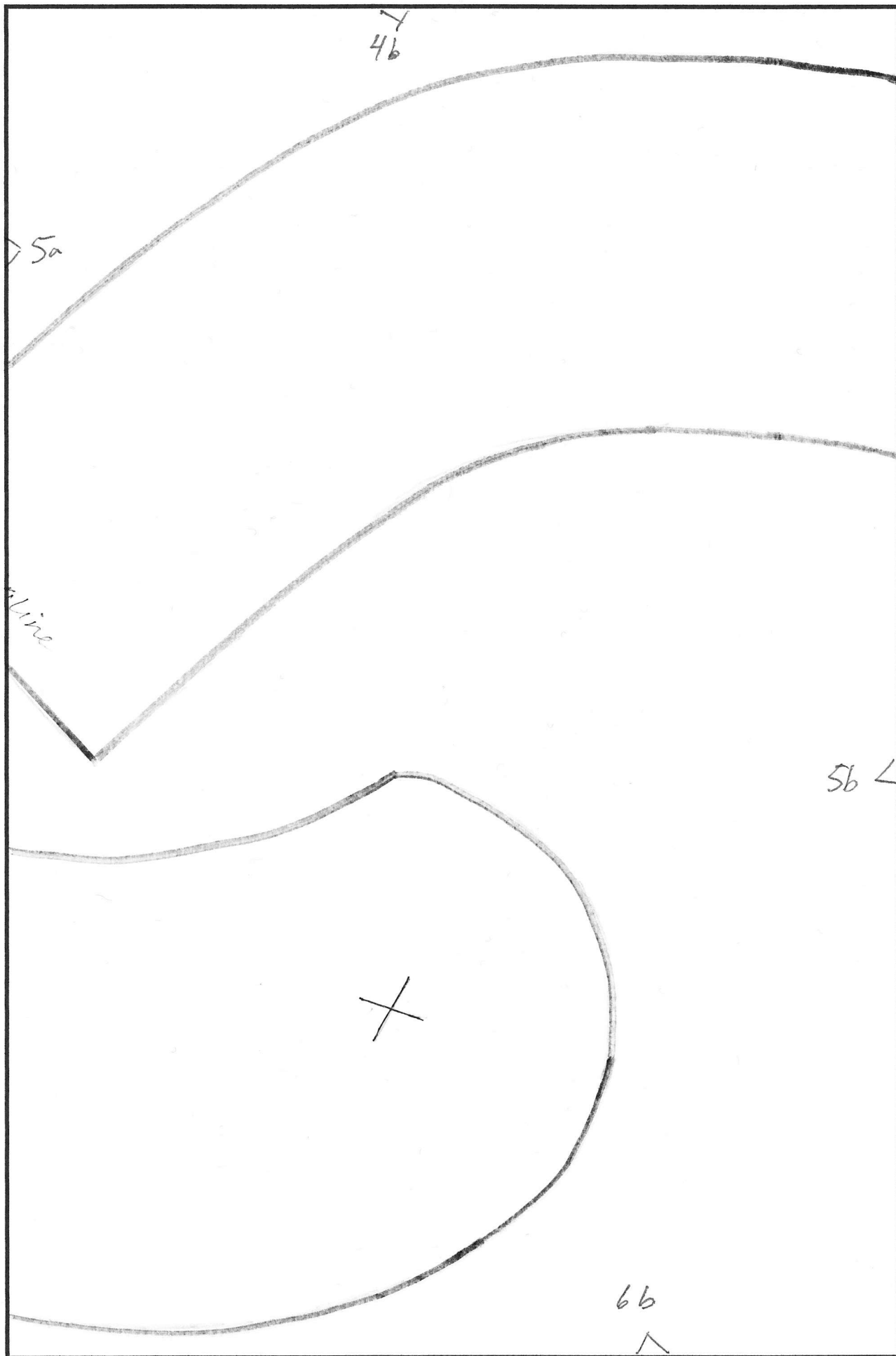
ENGLISH TUTOR DRESS  
SIZE 4  
BY ELAINENMAY/  
THE SELFISH SEAMSTRESS

5a

Grays  
counter back

right upper collar  
(cut 1)  
5/8" seam allowance  
included

6a





4c

Right under collar  
(cut 1)  
5/8" seam allowance  
included

ENGLISH TUTOR DRESS  
SIZE 4  
BY BLAINE MAY /  
THE SELFISH SEAMSTRESS

5b

6c

V  
6a

ENGLISH TUTOR PRESS

SIZE 4

By Elaine May / The Selfish Seamstress

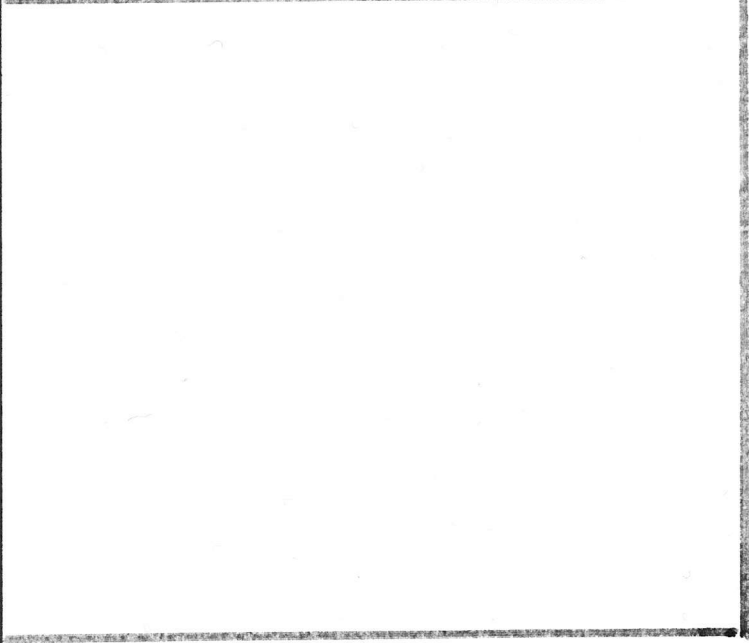
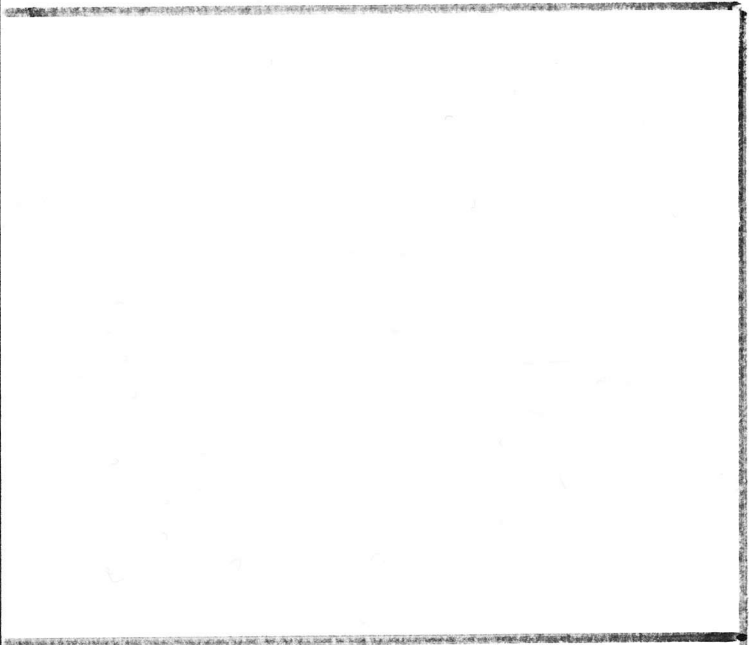
fold

Cuff (cut 2)

5/8" <sup>seam allowance</sup> included

7a <

✓  
6b



7a

7b

# The English Tutor Dress

By ELAINEMAY/ <sup>6c</sup>  
The Selfish Seamstress

To make this dress you will need the following pieces from Simplicity 2473, size 4:

- ① BODICE FRONT
- ② BODICE SIDE FRONT
- ③ BODICE BACK
- ④ MIDDRIFF FRONT
- ⑤ MIDDRIFF BACK
- ⑥ SLIM SKIRT FRONT
- ⑦ SLIM SKIRT SIDE FRONT
- ⑧ SLIM SKIRT BACK

- ASSEMBLE BODICE, SKIRT, AND MIDDRIFF AS SPECIFIED FOR SIMPLICITY 2473
- PLACE RIGHT UNDER COLLAR ON RIGHT UPPER COLLAR, RIGHT SIDES FACING. STITCH CENTER BACK AND LONG CURVED EDGE. CLIP AND TURN. BASTE NECK EDGE CLOSED. TOPSTITCH OUTER EDGE AND CENTER BACK.
- PLACE RIGHT COLLAR ON BODICE, UPPER COLLAR ~~ON~~ FACING, WRONG SIDE OF BODICE, MATCHING NECKLINES. BACK EDGE OF COLLAR SHOULD BE 5/8" IN FROM BACK EDGE OF BODICE (SEAM ALLOWANCE OF BODICE WILL BE TURNED UNDER. BASTE COLLAR ALONG NECK.
- ASSEMBLE LEFT COLLAR SAME AS RIGHT. STITCH COLLAR TO BODICE AND TURN COLLAR OUT TO ~~THE~~ RIGHT SIDE.
- STITCH SHORT ENDS OF CUFF, RIGHT SIDES INSIDE. TURN. FOLD CUFF IN HALF ALONG FOLD LINE. BASTE OPEN SIDE CLOSED.
- ~~AS~~ ASSEMBLE SLEEVE AS DIRECTED IN SIMPLICITY 2473 INSTRUCTIONS FOR "THREE QUARTER LENGTH SLEEVES" USING ENGLISH TUTOR DRESS PATTERN. DO NOT HEM.
- PUT ~~THE~~ CUFF IN SLEEVE, MATCHING SEAMS AND RAW EDGES. STITCH CUFF TO SLEEVE. TURN CUFF OUTWARD. TOPSTITCH.
- STITCH SLEEVE TO BODICE AS DIRECTED IN SIMPLICITY 2473
- STITCH ~~BUTTON~~ ONTO COLLAR AT X

76

PATTERN BY ELAINEMAY/  
FOR PERSONAL USE ONLY  
THE SELFISH SEAMSTRESS  
NOVEMBER 2009  
DONOT RE-PUBLISH OR REDISTRIBUTE!